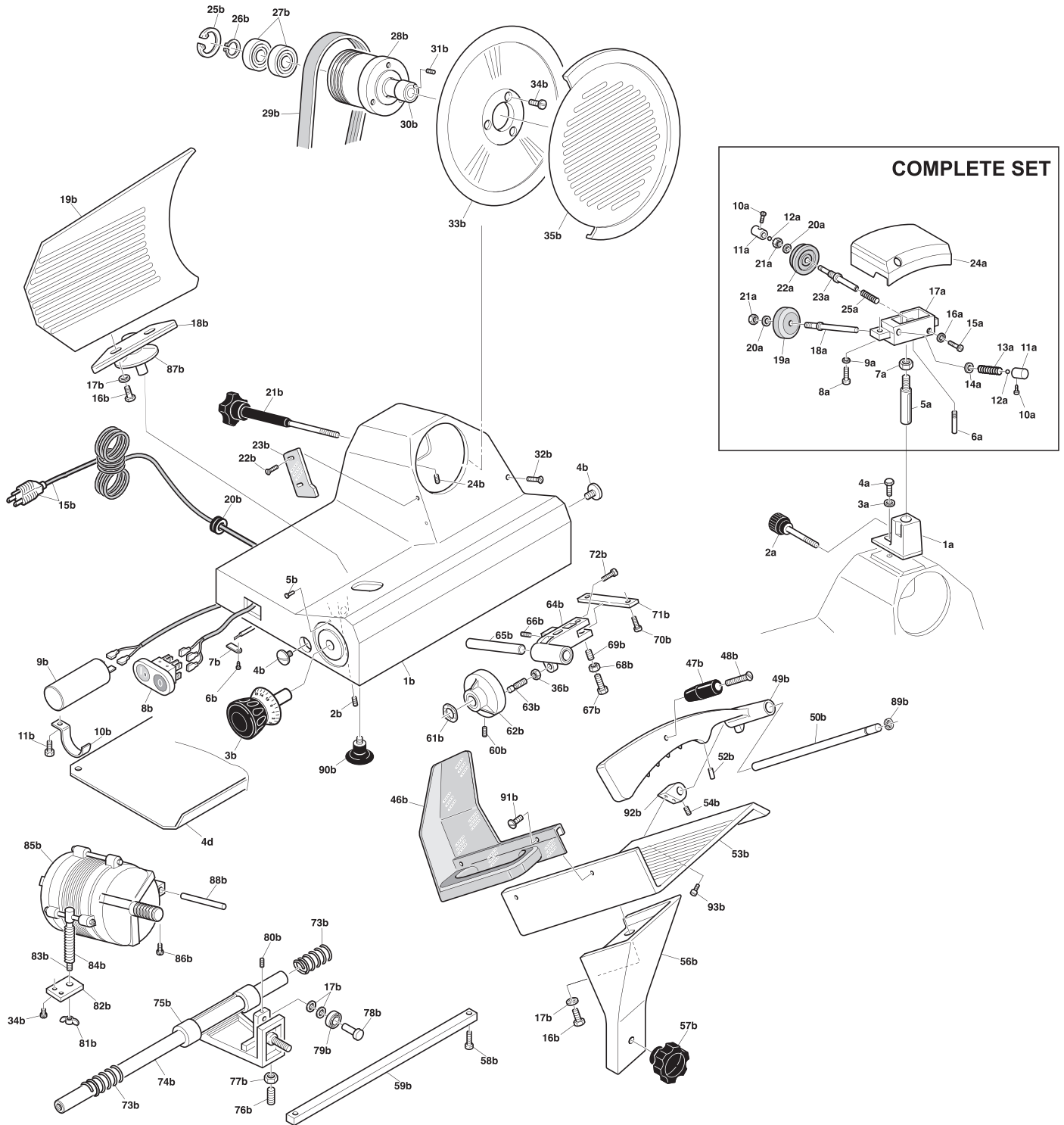


Parts Breakdown

Model MS-IT-0275-IP 13624



Parts Breakdown

Model MS-IT-0275-IP 13624

Item No.	Description	Position	Item No.	Description	Position	Item No.	Description	Position
AJ297	Pipette for 13624	A1	34189	Screw TE for 13624	B16	34225	Slide Support for 13624	B64
34154	Thumb Screw for Sharpener for 13624	A2	34190	Washer for 13624	B17	AJ320	Group Pin for 13624	B65
34155	Washer for 13624	A3	AJ303	Sail Support for 13624	B18	34228	Screw TC for 13624	B66
34156	Screw for 13624	A4	AJ304	Sail for 13624	B19	34229	Screw TC for 13624	B67
34157	Sharpener Shaft for 13624	A5	34193	Strain Relief for 13624	B20	34230	Nut for 13624	B68
34158	Screw for 13624	A6	AJ305	Blade Cover Tie Rod for 13624	B21	AJ321	Bead Head Hunting for 13624	B69
34159	Nut for 13624	A7	AJ306	Self-Tapping Screw for 13624	B22	34232	Screw for 13624	B70
34160	Screw for 13624	A8	AJ307	Parafette for 13624	B23	AJ322	Group Plate for 13624	B71
34161	Washer for 13624	A9	34197	Screw for 13624	B24	34234	Screw TC for 13624	B72
34162	Screw for 13624	A10	34198	Circlip for 13624	B25	34235	Slide Bar Spring for 13624	B73
34163	Push Knob for Sharpener for 13624	A11	34199	Circlip for 13624	B26	AJ323	Round Bar for 13624	B74
34164	Ball Bearing for 13624	A12	AJ308	Bearing for 13624	B27	34237	Carriage for 13624	B75
34165	Spring for 13624	A13	AJ309	Spindle Pulley for 13624	B28	34238	Carriage Screw for 13624	B76
34166	Washer for 13624	A14	AJ310	Belt for 13624	B29	34239	Carriage Nut for 13624	B77
34167	Screw for 13624	A15	AJ311	Spindle Pin for 13624	B30	34240	Pin for 13624	B78
34168	Washer for 13624	A16	34204	Screw for 13624	B31	AJ324	Bearing for 13624	B79
AJ298	Sharpening Block for 13624	A17	34205	Screw TC for 13624	B32	34242	Screw for 13624	B80
34170	Grinding Shaft for 13624	A18	13590	Blade for 13624	B33	34243	Wing Nut for 13624	B81
18016	Omcan G Stone 50x08x06 for 13624	A19	34207	Screw for 13624	B34	34244	Plate for 13624	B82
34172	Washer for 13624	A20	23902	Blade Cover for 13624	B35	34245	Motor Adjustment Bar for 13624	B83
34173	Nut for 13624	A21	14976	Wrist Guard Plate for 13624	B46	34246	Spring for Adjustment Bar for 13624	B84
33032	45x9x6 Sharpening Stone for 13624	A22	AJ312	Pressing Knob for 13624	B47	AJ325	Ventilated Motor for 13624	B85
34175	Honing Shaft for 13624	A23	AJ313	Screw T.P.S.V. for 13624	B48	34248	Screw for 13624	B86
AJ299	Sun Canopy EXCE for 13624	A24	AJ314	Presser for 13624	B49	AJ326	Vent for 13624	B87
34177	Spring for 13624	A25	AJ315	Rod for 13624	B50	34250	Motor Pin for 13624	B88
34178	Casing for 13624	B1	34214	Lock for 13624	B52	AJ327	Compass for Locking Gear Press for 13624	B89
34179	Screw for 13624	B2	AJ316	Plate for 13624	B53	14933	Foot for 13624	B90
AJ300	Graduated Knob for 13624	B3	34216	Screw for 13624	B54	AJ328	Flat Guard Screw for 13624	B91
AJ301	Screw Inox for 13624	B4	AJ317	Arm for 13624	B56	AJ329	Block for 13624	B92
34182	Rivet for 13624	B5	AJ318	Arm Knob for 13624	B57	AJ330	Allen Screw for 13624	B93
34183	Screw for 13624	B6	34219	Screw for Support Bar for 13624	B58	37118	Bottom Cover for 13624	D4
34184	Plate for 13624	B7	AJ319	Square Bar for 13624	B59	19283	Complete Meat Tray Assy for 13624	
AJ302	Switch for 13624	B8	34221	Screw for 13624	B60	34226	Slide Support Complete for 13624	
34186	Capacitor for 13624	B9	34222	Washer for 13624	B61	15156	Complete Sharpening Assy for 13624	
34187	Clamp for 13624	B10	34223	Cam for 13624	B62			
34188	Screw TC for 13624	B11	34224	Cam Screw for 13624	B63			